

TRAFFIC ANALYZER

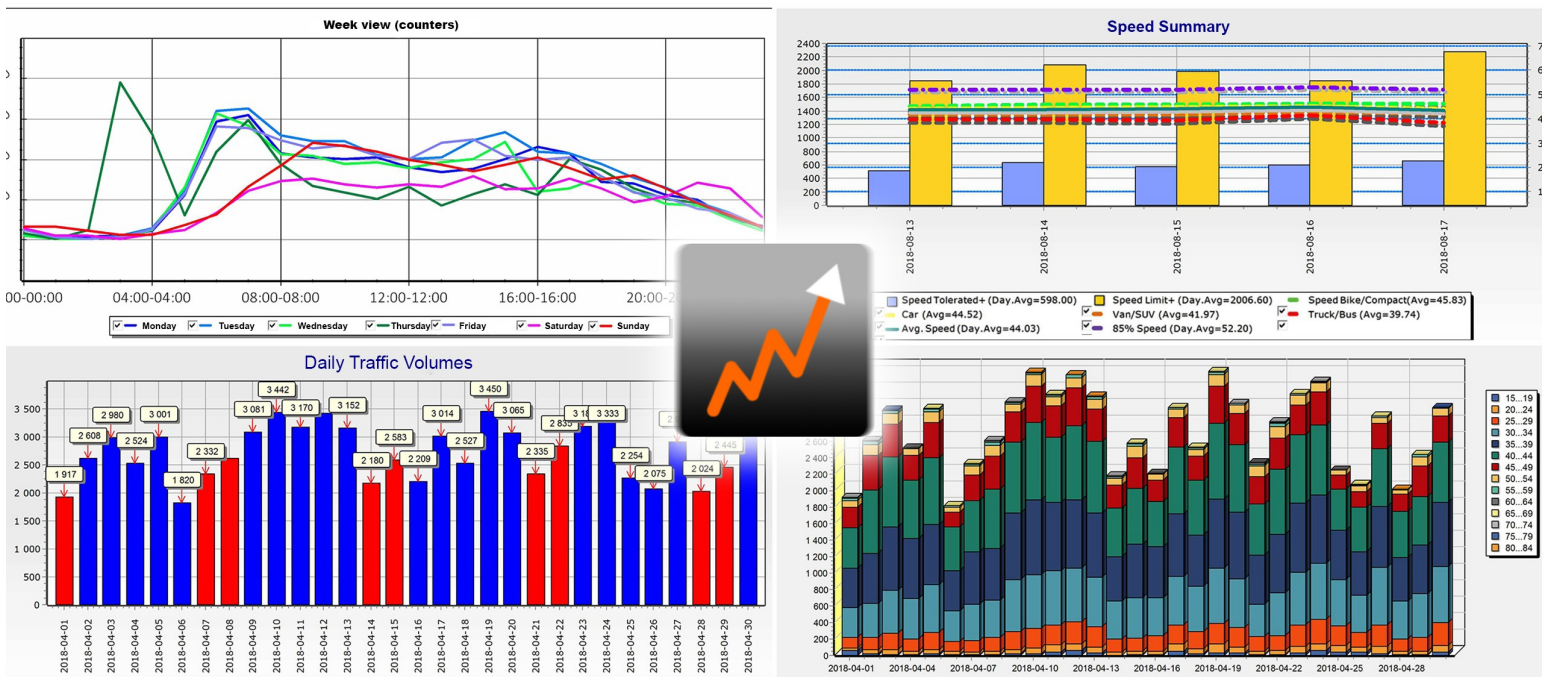
A two-way Doppler road traffic analyzer, highly accurate on speed (over 99.5%) and therefore less accurate on counting. Which makes for non-intrusive field analysis. The speed analyzer gathers precise and detailed statistics. The radar has graphic display and four navigation buttons for a quick and simple set-up. It provides an excellent understanding of traffic speed by time slot, approximate traffic flow ($\pm 90\%$) and its AADT, speed variation (acceleration/deceleration) as well as the distribution of traffic into four (4) classes of vehicles (motorcycle, car, SUV and truck) and the 85th percentile.



Deep analysis to improve road traffic flow

This is a bi-directional traffic analyzer and not a vehicle counter. The counting accuracy of the analyzer will vary depending on the traffic density and the road configuration. For example, in a residential area on a straight 300m segment without intersection, the accuracy will be close to 100%.

On the other hand, in dense traffic or four lanes, vehicles could obstruct the capture of the smaller ones and the counting would be altered. However, the speed report generates analysis information for a good management of your road network.



- ▶ Two-way doppler road traffic analyzer
- ▶ Vehicles classification four classes (motor cycle car, SUV and truck)
- ▶ Vehicles speed by time slot
- ▶ Traffic flow by time slot
- ▶ 15 minutes installation
- ▶ Batterie autonomie 7/10 days
- ▶ Solar & Cloud optional for permanent installation

TECHNICAL SPECIFICATIONS OF THE TRAFFIC ANALYZER

Traffic Analyzer

<i>Housing</i>	<i>ABS</i>
<i>Mounting Bracket</i>	<i>Stainless steel</i>
<i>Weight</i>	<i>1.1 kg (2.4 lbs)</i>
<i>Radar Type</i>	<i>Doppler (24.125 Ghz)</i>
<i>Data Collection</i>	<i>Bidirectional</i>
<i>Range</i>	<i>300 m (1000 pi)</i>
<i>Width</i>	<i>12°Hx 24°V</i>
<i>Captured Speeds</i>	<i>5 to 200 km/h (3 to 124 mph)</i>
<i>Wireless Communication</i>	<i>Bluetooth (optional)</i>
<i>Wireless Range</i>	<i>Up to 100 m (328') without obstacles</i>
<i>Power Source</i>	<i>7.4 V Lithium battery</i>
<i>Nominal Current</i>	<i>35 mA</i>
<i>Battery Autonomy</i>	<i>Up to 7 days</i>
<i>Power Supply</i>	<i>Solar panel (optional)</i>
<i>Voltage In</i>	<i>10.8 to 28 VDC</i>
<i>Operational Temperature</i>	<i>-40 to 50°C (-40 to 122°F)</i>

